

Toward the Coexistence of Humans and Nature



Ibaraki Kasumigaura Environmental Science Center (IKESC)



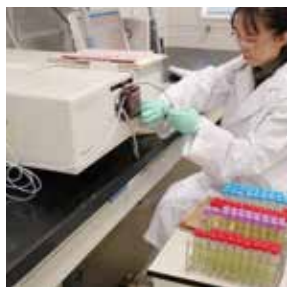
Compliments

IKESC was founded in 2005, after advocacy for its establishment at the 6th World Lake Conference held in 1995 in Tsukuba and Tsuchiura.

IKESC aims to effectively perform its four functions - research and technical development, environmental education, cooperation with and support for citizen's activities, and information exchange.

These functions performed through the partnership with citizens, researchers, business companies, and governments in order to tackle issues related to the conservation of lakes and rivers in Ibaraki.

The Four functions of IKESC



Research and Technical Development

Study and technical development for the conservation of Ibaraki's lakes and rivers

- Study on water quality dynamics and technical development to keep the of Lake Kasumigaura, other lakes and rivers in Ibaraki in good states
- Suggestion of environmental policies based on the outcomes of reserch
- Promotion of cooperation in the reserch sphere by sharing information with researchers and citizens through public seminars and presentations of research results



Environmental Education

Provision of oppotunities and spaces for environmental education

- Facilities for environmental education
 - Exhibition room : A comprehensive look at Ibaraki's lakes and rivers
 - Teaching Laboratory : observation, experiments, and workshop
 - Outdoor Plaza : observation of living organisms and ecosystem in a natural environment
- Environmental education programs
 - Lectures and tutorials
 - School classes
 - Hands-on workshops

- Provision of a salon where citizens involved in environmental conservation can exchange information
- Direct participation of partners(volunteers) in the operation of the IKESC through assisting with environmental education and working as staff at conservation events
- Loaning equipment for environmental cleanup and education activities
- Provision of subsidies to citizens' groups involved conservation activities

- Spreading of information through IKESC' s website and email magazine
- Provision of a reference library open for everyone
- Hosting of exchange events and symposiums for citizens, reserchers, business companies, and local governments



Places for environmental activities and support through the creation of a network of professionals and organizations

Cooperation with and Support for citizens'activities

Collecting and sharing information about Kasumigaura

Information Exchange



Research and Technical Development

Water environment group

This group studies on mechanisms of eutrophication of lakes in Ibaraki prefecture.



- Subjects:
- i) Studies on phytoplankton change
 - ii) Studies on nitrogen and phosphorus dynamics
 - iii) Studies on external loads from watersheds
 - iv) Studies on water environment in Lake Kasumigaura, and others
- etc...

Air environment and chemical substance group

This group studies on atmosphere, soils, groundwater and noise.



- Subjects:
- i) Studies on hazardous air pollutants
 - ii) Studies on Noise
 - iii) Studies on chemicals in the environment
 - iv) Studies on soil and groundwater pollution
 - v) Studies on hazardous waste
- etc...

Environmental Education

Environmental education



Provides opportunities for environmental education and visiting lectures.

Poster competition lead to purification of Lake Kasumigaura

The contest was held to raise awareness of Lake Kasumigaura, for elementary and junior high school students. Prize-winning posters are on traveling exhibition.



Workshop etc...



Study tours of nature observation, fish, insects and wild-birds in Kasumigaura



Synthetic study of Lake Kasumigaura, quality of water, history, water utilization, industry etc...

Events at IKESC



Water environmental events are held during the waterpurificatin campaign week.

Cooperation with and Support for citizens' activities

Salon for citizens' interchange



Salon for citizens' interchange is an open space for public to interchange with each other through environmental conservation activities.

Subsidy to environmental conservation activities



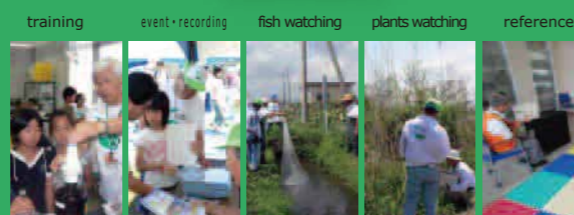
Provides subsidies to citizen groups in Ibaraki prefecture with environmental activities and study.

Lend machinery



Lends machinery for environmental conservation activities to citizen groups.

Partners



Volunteers participating in the operation of the IKESC.

Information Exchange

Sending out information

- 【official reports】
- a proceeding (once a year)
 - an annual report (once a year)
 - mail magazine (once a month)
 - ※only an applicant by internet
 - announce information of events to supporters 【website】
 - introduction of groups tackling environmental problems, information transmission of events
 - information transmission of reserch accomplishments etc...

Reference room(Library)

Access to technical books related to Kasumigaura and environmental issues.

【lending service】
You need to register for supporter. (free of charge)
The number of materials you can borrow is five.
Lending period is within 14 days.

Promotion of interchange



Promotes a relationship between school students and citizens by giving opportunity.

Using of computer equipment

There are computers in salon for citizens' interchange and reference room.
You may reserve the information desk on the second floor.

- ※Available time is 30 minutes.
- ※Elementaly student may use with a guardian
- ※Show identification card or studentcard

overall map



1 Welcome to Lake Kasumigaura

Let's start learning about Lake Kasumigaura with joy.



Entrance of exhibition facility



Rapid survey map of Kasumigaura
A map made in the Meiji era.

5 Think about the global environment

Expand your view and learn about global environmental problems



Big adventures of global environment
Learn about global environmental problems with enjoying television pictures game

4 Trying for clear water

cause of water pollution and learn about what we can do



digital picture book theater
"Serious matter in Lake"

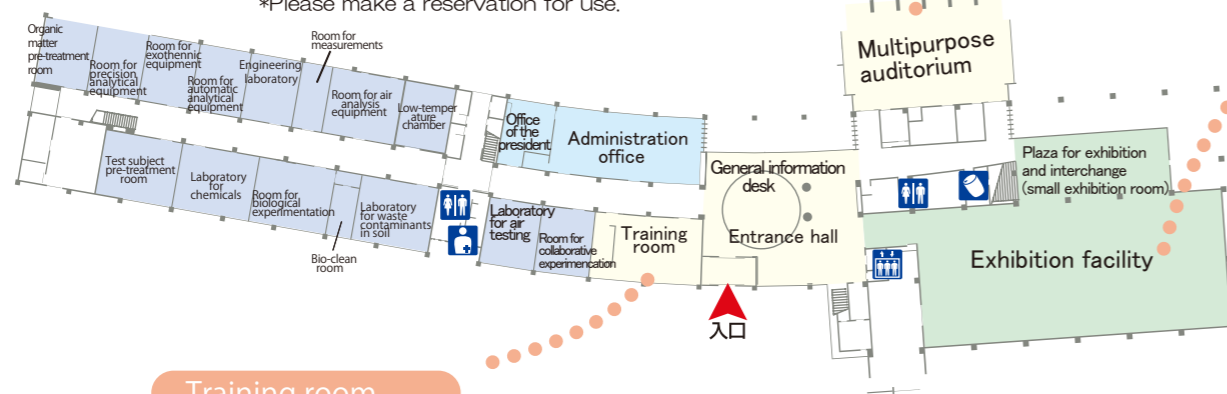
Hands-on quiz
"Think about household waste water"
AR experience
"Our declaration of Lake Kasumigaura"



1F

Multipurpose auditorium

A classroom style auditorium is available for 200 people. Partitions are also available to separate the space into two rooms.
*Please make a reservation for use.



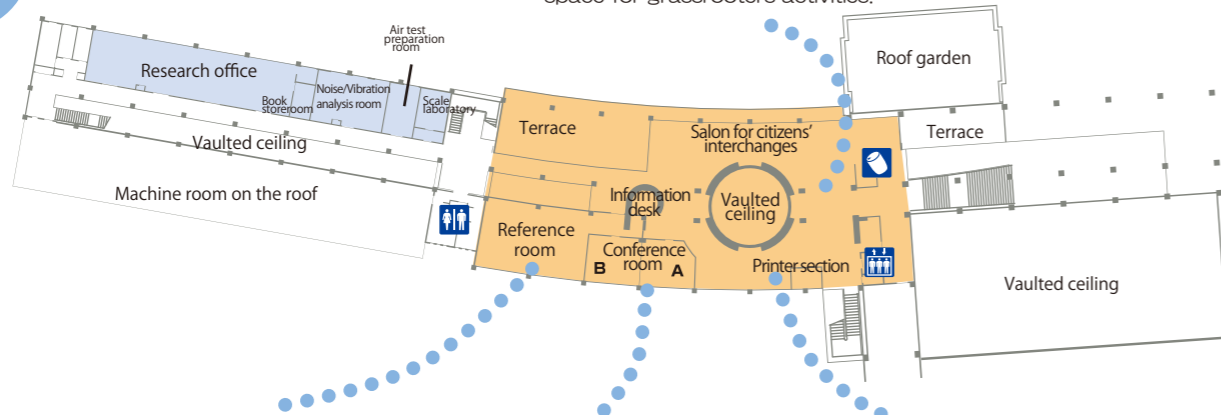
Training room

Capacity of up to 50 participants including the instructor. Microscope and other equipment are available.

2F

Salon for citizens' interchange

space for grassroots activities.



Reference room

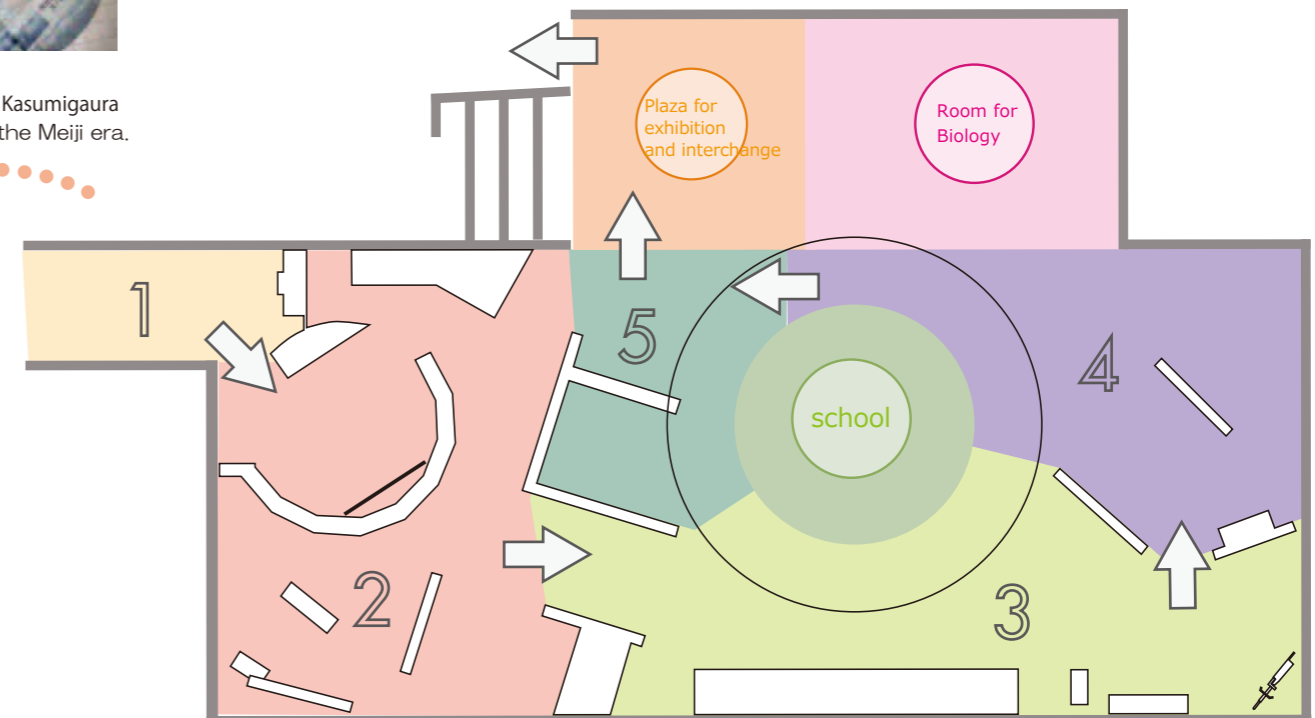
Access to technical books related to lake environments etc. A lending service is partially available.

Conference room

Two rooms are available for various meeting, sessions, and training. (Free of charge)
*Please make a reservation for use.

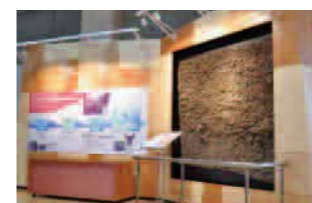
Printer section

A printer is available for grassroots activities. Please bring printing paper. (free of charge)



2 History and life around Kasumigaura region

Follow the history and people's life of Lake Kasumigaura



Time capsule of Jomon people

Fishery of Kasumigaura
Hobikisen was traditional fishing boat used in Kasumigaura



3 Creatures of Kasumigaura

Learn about relationship between ecosystem and life, industry around Lake Kasumigaura the present



Organisms quiz in Lake

Quiz of living organisms in Lake Kasumigaura are ready on the wall

A picture history by liquid crystal display

"Let's compare life of the 30 years ago with the present"



Ibaraki Kasumigaura Environmental Science Center (IKESC)

The IKESC symbol and mascot were chosen from the designs submitted from all around Japan (349 designs were submitted for the symbol, 292 for the mascot) after consideration of their visual appeal, functionality, and whether they represented the principles of IKESC.

Symbol



The IKESC symbol depicts fish gathering around ripples in a beautiful lake. Together, the fish and ripples form the “K” of Kasumigaura.

Mascot



The IKESC mascot is a nature spirit with the form of water drops on green leaves glittering in the morning sunlight.

Opening hours

Exhibition Hall	10:00 a.m.-4:30 p.m. (Last entry 4:00 p.m.)
Exchange Salon	9:00 a.m.-5:15 p.m.
Reference Library	9:00 a.m.-5:15 p.m.

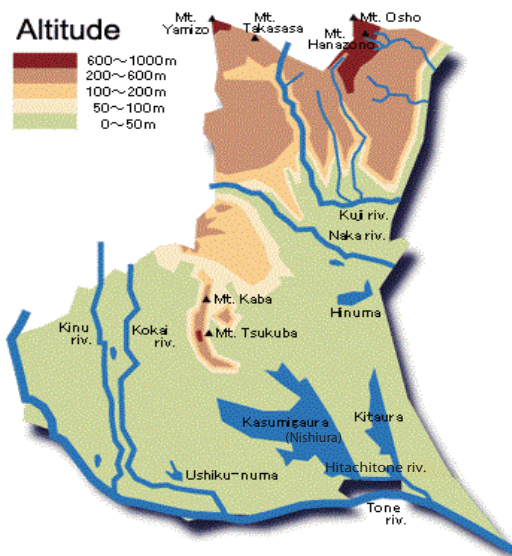
Days closed

Mondays

(except when Monday is a national holiday-in this case, the Center is closed the following Tuesday)

December 29th-January 1st

Lakes and rivers in Ibaraki



Administratively, “Lake Kasumigaura” is composed of Kasumigaura (Nishiura), Kitaura, and Hitachitone river.

Contact

Ibaraki Kasumigaura
Environmental Science Center

1853 Okijyuku-machi, Tuchiura, Ibaraki,
300-0023, Japan

TEL 029-828-0960

FAX 029-828-0967

